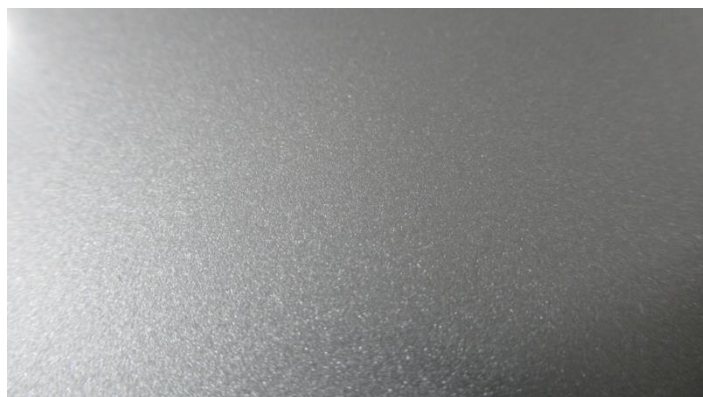




Aluminum Masterbatch MHF Series

Features

- The high concentration and favorable dispersion of the aluminum particles are achieved without deteriorating the brilliant features of aluminum when added in plastics.
- Coarse grains do not appear on the surface of the final molded product even when adding the product, which allows a favorable exterior design in metallic colors.
- Our unique technology offers uniform pellet shapes that hardly causes uneven distribution when mixing the masterbatch with resin pellets.
- The different metallic-color designs are the result of the wide range of particle sizes and two types of particle shape.
- Two types of base resin LD-PE and AS are available in the product lineup, which ensure a wide application range for plastics.



Example of Shaped Product



Shape of Masterbatch

Product Lineup

Particle Size [μm]	Particle Shape	Design Features	Base Resin	Aluminum Concentration [%]	Product
5	Coin	Dense texture, high brightness, and high whiteness	AS	50	M H F - A - 0 5 C B 5 0
			LD-PE	65	M H F - E - 0 5 C B 6 5
10	Coin	Dense texture, high brightness, and high whiteness	AS	50	M H F - A - 1 0 C B 5 0
			LD-PE	65	M H F - E - 1 0 C B 6 5
20	Coin	Metallic texture	AS	50	M H F - A - 2 0 C B 5 0
			LD-PE	60	M H F - E - 2 0 C B 6 0
30	Coin	Brilliant particle texture	AS	50	M H F - A - 3 0 C B 5 0
			LD-PE	60	M H F - E - 3 0 C B 6 0

Contact Colors & Advanced Processing Department, Nagase & Co., Ltd.
Osaka TEL: +81-6-6535-2426 FAX: +81-6-6535-2250
Nagoya TEL: +81-52-963-5685 FAX: +81-52-963-5673
Tokyo TEL: +81-3-3665-3278 FAX: +81-3-3665-3808

Manufacturer Resino Color Industry Co., Ltd.
Distributor Nagase & Co., Ltd.